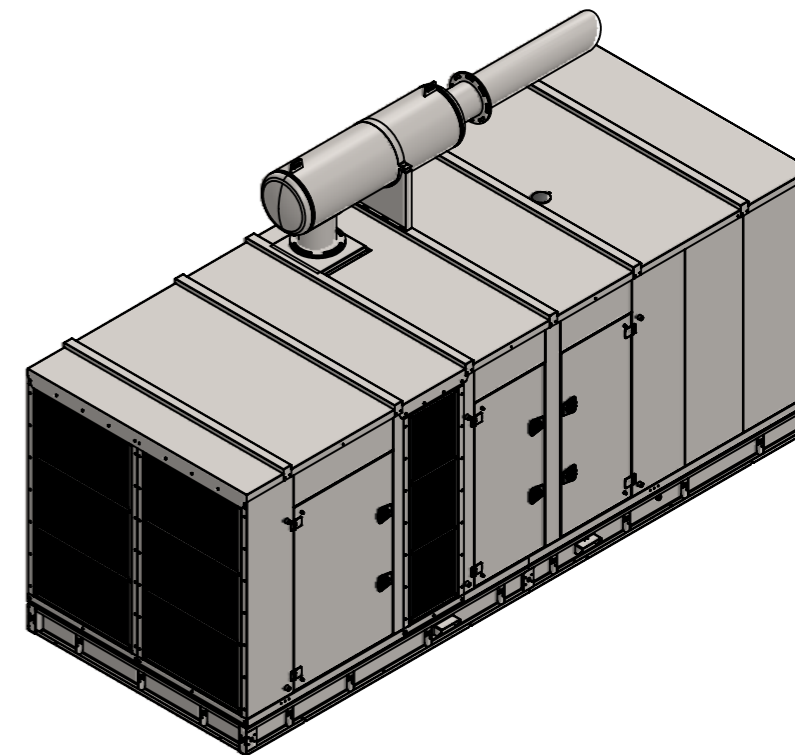
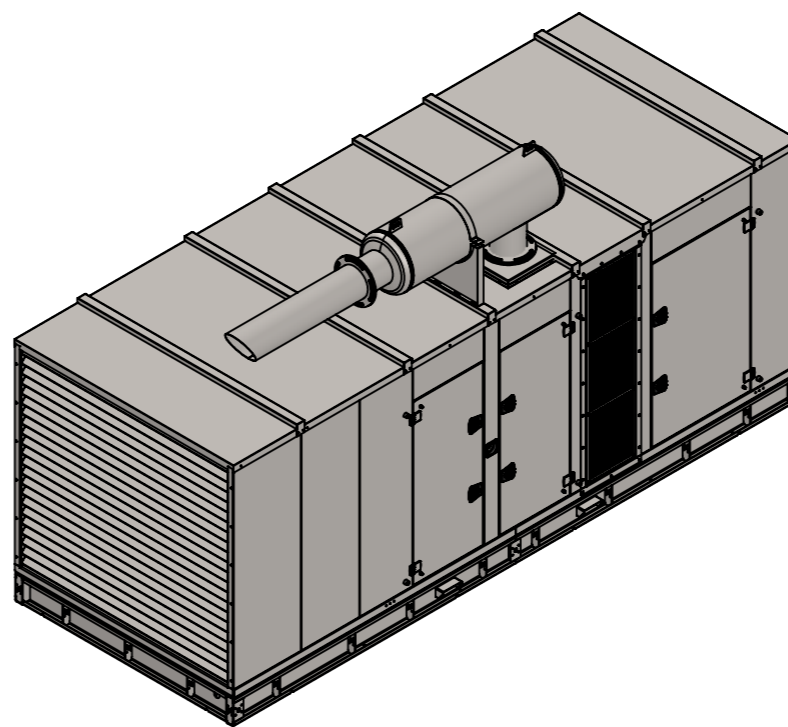
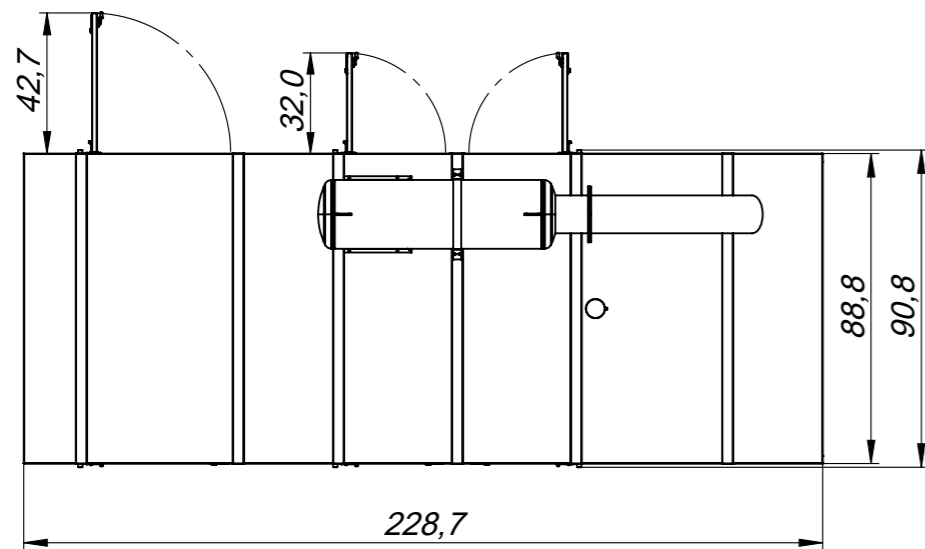
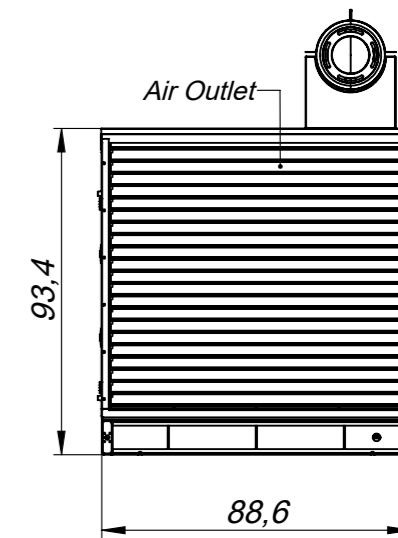
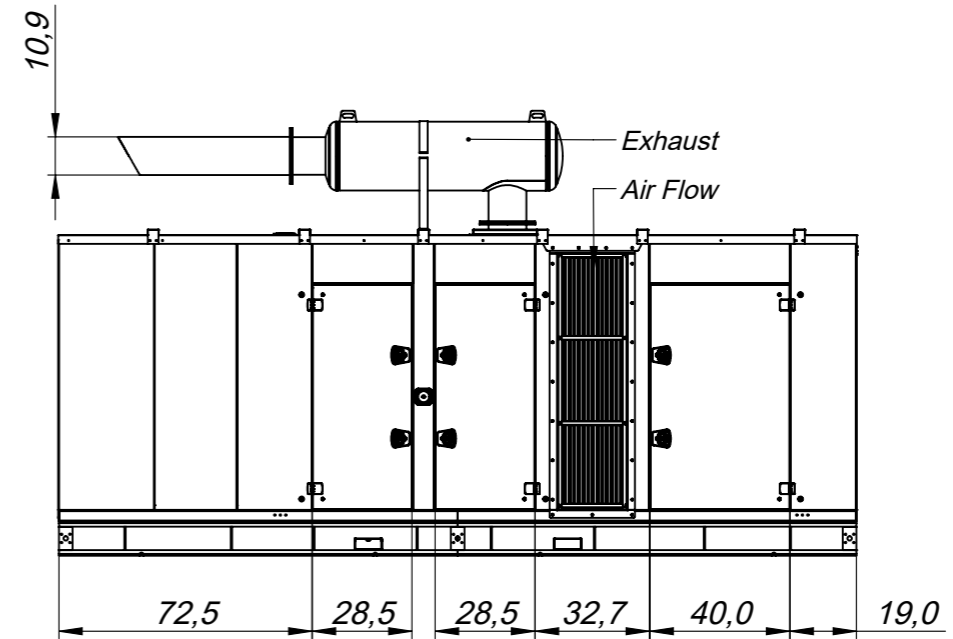
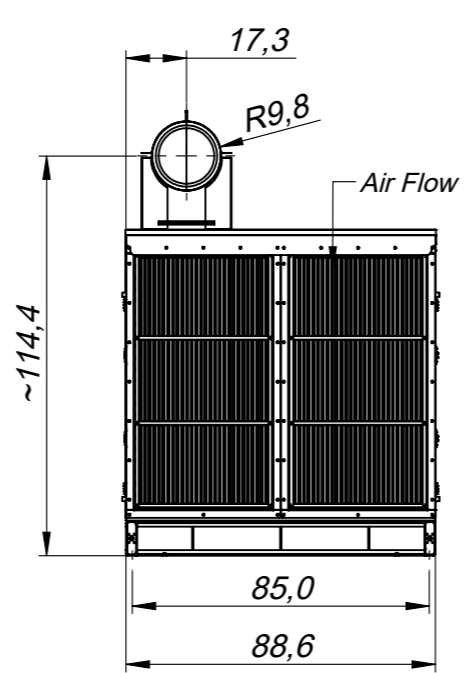
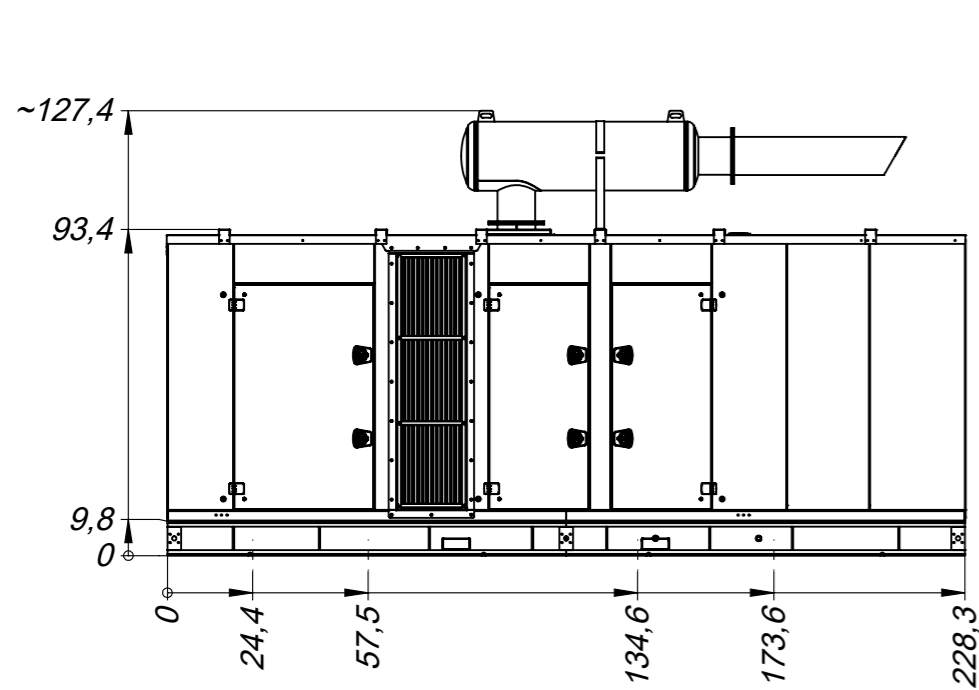


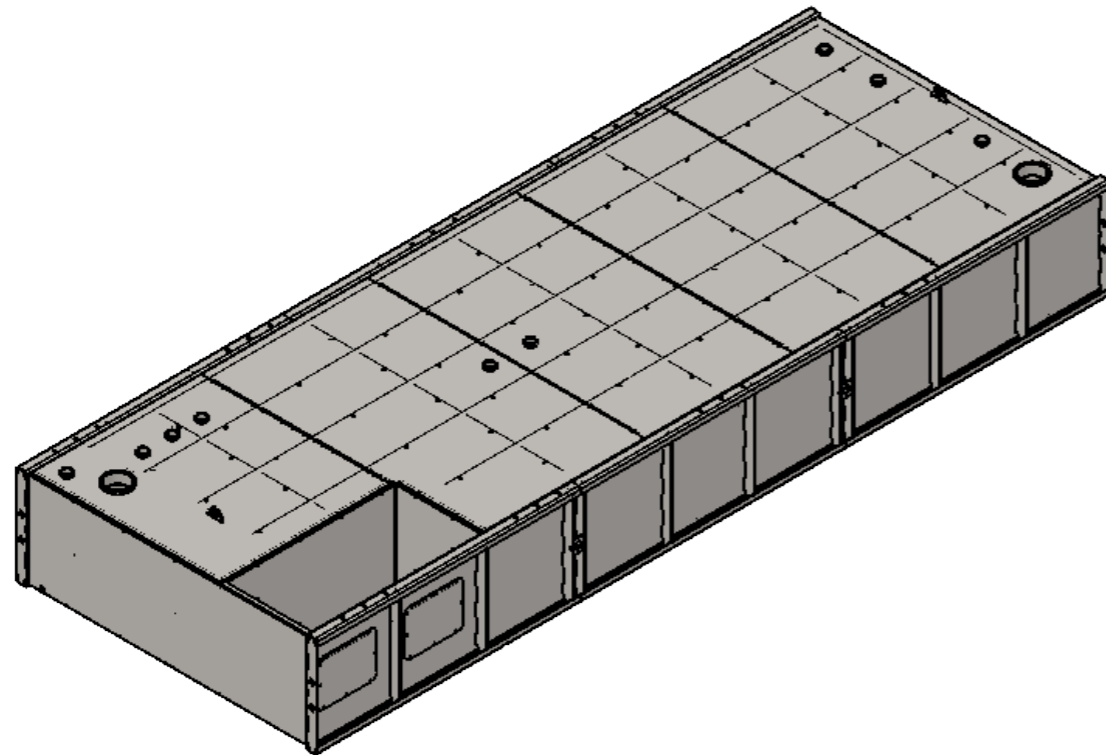
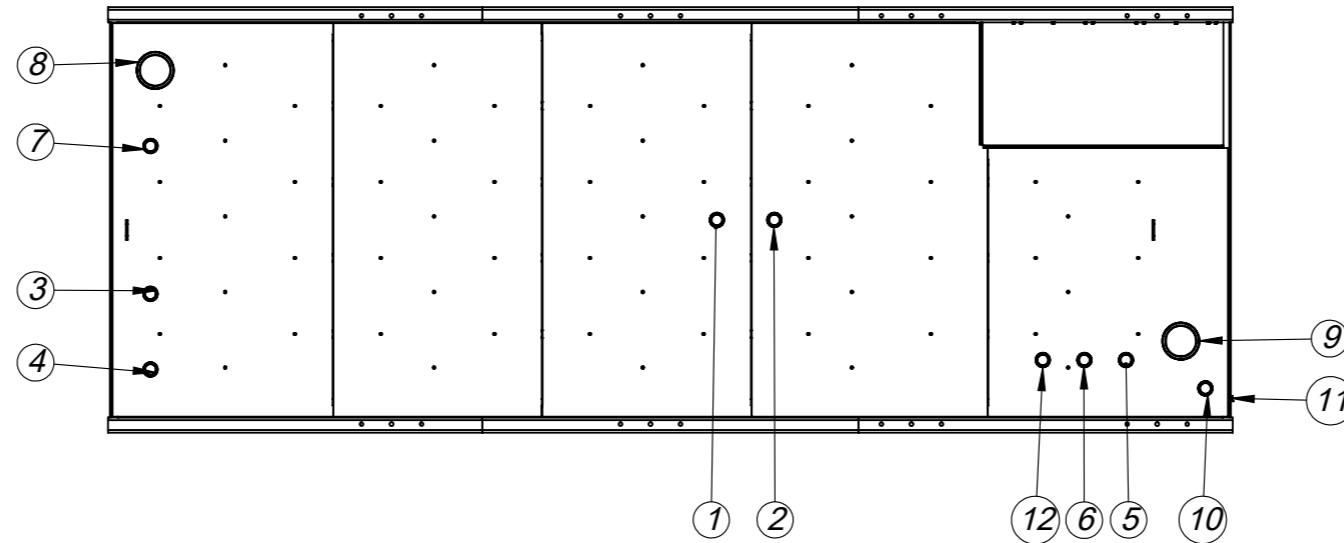
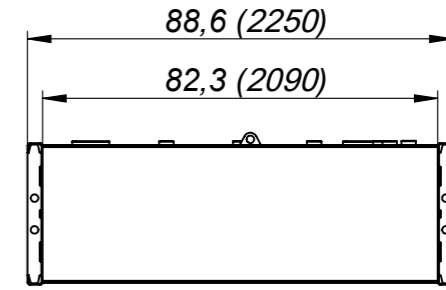
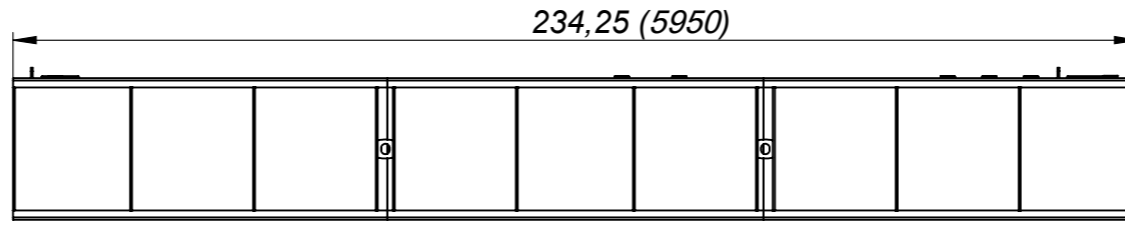
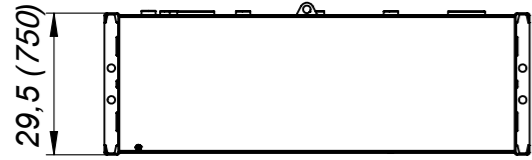
*DIMENSIONAL DRAWINGS*





Do not take measurements based on the drawing.  
This illustration may be changed without notice and is for informational purposes only.

	Tolerances	Name	Date	Document No
	ISO 2768	Drawn Melih Gülşen	09-01-2024	SM-240185437
		Checked -	-	Part Code
		Approval -	-	-
	1. Projection Method	Paper Size	Scale	Order No
		A3	1:55	-
			Rev. No	Title
			-	<b>DRAFT</b>



<b>UL 142</b>	
<b>GROUP-7 (1800 GALLON)</b>	
<b>NOTES (PRIMARY STEEL TANK)</b>	
Thickness of tank;	
Lifting Lug & Support Brackets: 10mm	
Primary Tank: 4mm	
Secondary Tank: 6mm	
<b>TANK SPECIFICATION</b>	
Shell Material: S235JR	
Coupling Material: ASTMA106	

12	1	2" (NPT)	ASTMA105	Spare Normal Vent
11	1	1/2" (NPT)	ASTMA105	Secondary Tank Drain
10	1	2" (NPT)	ASTMA105	Leak Detection Coupling
9	1	6" (NPT)	ASTMA105	Secondary Tank E. Vent
8	1	6" (NPT)	ASTMA105	Primary Tank E. Vent
7	1	2" (NPT)	ASTMA105	Normal Vent
6	1	2" (NPT)	ASTMA105	Fuel Low Level Sensor
5	1	2" (NPT)	ASTMA105	Fuel High Level Sensor
4	1	2" (NPT)	ASTMA105	Automatic Tank Gauge
3	1	2" (NPT)	ASTMA105	Filling Coupling
2	1	2" (NPT)	ASTMA105	Return Coupling
1	1	2" (NPT)	ASTMA105	Suction Coupling

<b>TEKSAN</b>	Tolerances	Name	Date	Document No
	ISO 2768	Yasin Parlak	09-06-2023	SM-230682430
		Checked Ferhat Nergis	-	Part Code
		Approval Murat Uysal	-	-
*_*	1. Projection Method	Scale	Order No	Rev. No
		A3	1:40	R01(G)
				<b>DRAFT</b>

Do not take measurements based on the drawing.  
This illustration may be changed without notice and is for informational purposes only.