

ST120SN3R BREAK GLASS REMOTE E-STOP SWITCH

**Description:**

All metal NEMA 3R Rainproof enclosure with ½" & ¾" knockouts on the back and bottom. Attached hammer with holder and retaining chain.

Glass covered operator which accepts one to six contact blocks.

Labelled EMERGENCY ELECTRICAL DISCONNECT and BREAK GLASS TO RELEASE BUTTON.

Electrical Characteristics:

Contact blocks (Normally Closed P/N PILNCCB)

Screw and captive clamp terminals.

Min: 1 X 24 AWG Max: 2 X 16 AWG

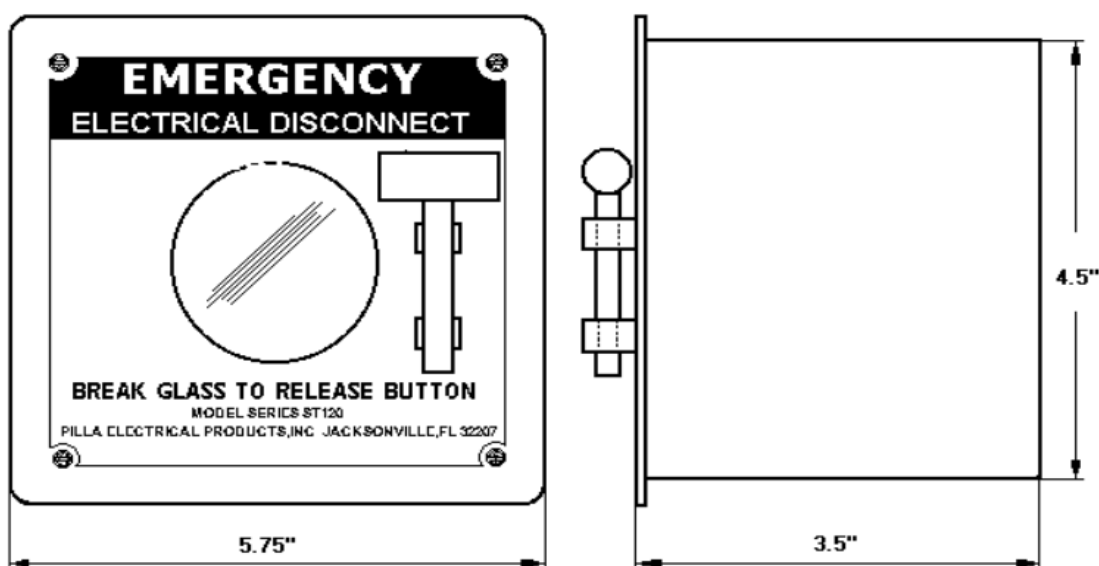
600 Vac @ 1.2 Amp

250 Vdc at 0.27Amp

120 Vdc @ 0.55 Amp

**Specification:**

BREAK GLASS EMERGENCY ELECTRICAL DISCONNECT SWITCH P/N ST120SN3RS uses a single device in a Break Glass to Release Button standard operating mode in which the operator automatically releases and is maintained when the glass is broken with the attached hammer. The standard Break Glass to Release Button operating mode reverses the nominal state of the installed contact blocks such that type contact blocks remain open/closed when the glass is intact and the close/open when the glass is broken and the button releases.



PILLA MODEL ST120FN1 BREAK GLASS STATION

